



UNIVERSITY OF DAR ES SALAAM MKWAWA UNIVERSITY COLLEGE OF EDUCATION (MUCE)

FACULTY OF EDUCATION, DEPARTMENT OF EDUCATIONAL PSYCHOLOGY AND CURRICULUM STUDIES



SPECIAL NEEDS EDUCATION UNIT

Course Details

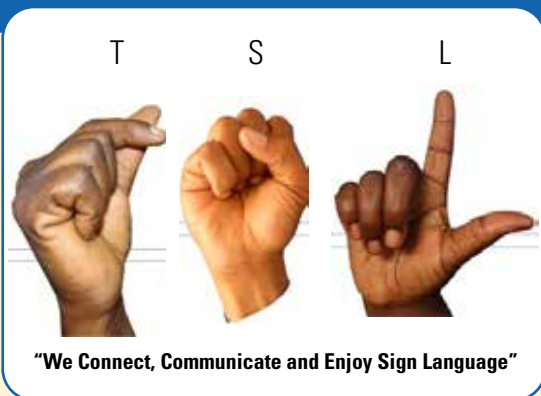
Course Name: The Short Course on the Tanzania Sign Language (SCTSL).

Duration: The course lasts seven weeks.

Course Expected Learning Outcomes

On completion of the course, TSL learners should demonstrate, among others:

- Expressive and receptive communication skills with the deaf community using TSL.
- The ability to develop appropriate sign language concepts using TSL.
- The ability to communicate with persons with deafness across a range of contexts and situations using TSL.
- The ability to read Kiswahili and English numerals and alphabets using TSL.



Entry Requirements

Any person interested in developing skills in TSL can register for the course. People from the general public, employees in public and private institutions are eligible for the training. The language of instruction is Kiswahili to accommodate a diverse range of potential applicants. It implies that learners who are not deaf must know how to read, speak, and write in Kiswahili.

Course Delivery Mode

This course is an evening designed programme delivered from Monday to Friday at 1630 to 1830 hours daily with affordable flexibilities. It is delivered on face-to-face mode including various activities such as lectures, discussions, modelling, dialogue and small group conversational practices, and audio or video-related tasks.

Tuition Fee and Payment Arrangements

The fee structure for this course is as follows:

- a) 100,000.00 TZS for MUCE students
- b) 200,000.00 TZS for MUCE staff
- c) 300,000.00 TZS for non-MUCE students and staff

Payments can be made once or in two instalments

Certification

The certificate for the TSL course shall be awarded to candidates who satisfy the requirements for the course award in terms of the acquired competencies in using TSL to communicate with persons who are deaf or hard-of-hearing. The award of this course is recognised as a certificate of attendance, which indicates the candidate's accomplishment of the course.

Contact Information

Faculty of Education,
Special Needs Education Unit
Mkwawa University College of Education (MUCE)
University of Dar es Salaam
P. O. Box 2513, Iringa, Tanzania
Tel: +255 762 613 729

Follow us on social media for updates:



Facebook: @MkwawaUniversityCollegeOfEducation



Instagram: @officialmuce



X (formerly Twitter): @officialmuce

How to Apply:

Online via MUCE website or physically visit the office of the Coordinator, Special Needs Education Unit MUCE

Application Deadlines:

- i) 30th October 2025 for November 2025 Intake
- ii) 30th March 2026 for April 2026 Intake

www.muce.udsm.ac.tz

